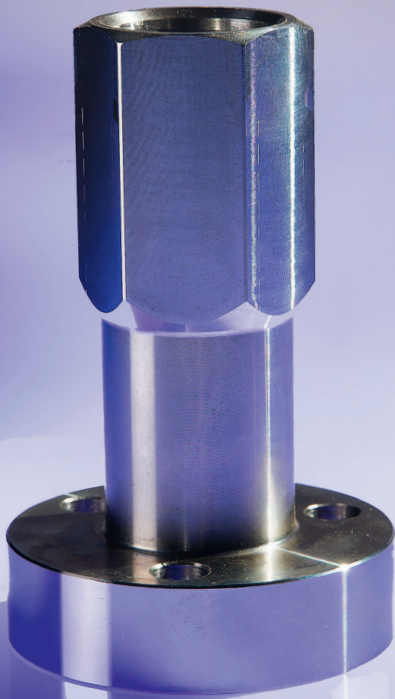


Drilling Core Catcher

BKF 350



M a n u a l



Drilling Core
Catcher
BKF 350

Congratulations on purchasing this Drilling Core Catcher. Please read all instructions and safety information carefully and thoroughly before using this product. Also, you have to determine the thickness of the wall or ceiling, before you can start drilling.

Preliminary Remarks /
Safety Regulations

- 1 The Drilling Core Catcher BKF 350 is designed for standard drill bits with up to 350 mm (13,78”) diameter and a working length of 45 cm and 1 ¼” UNC drill spindle and also for clockwise rotating drilling motors with a power rating of max. 3,9 kW. The maximum thickness for walls and ceilings to be drilled is 35 cm.
- 2 For securely catching the drilling core, an additional dowel is required. This dowel is required to have an M 10 internal thread. Please, also make sure to use the proper dowels for respective drilling diameters considering towing capacity, distance from the edge, and material to be drilled. (If in doubt, please ask the dowel manufacturer for further information.)
- 3 Floor structures such as screed with isolation have to be previously removed from the raw concrete ceiling. By all means, the dowel has to be placed into the uncracked and well compressed concrete according to the dowel manufacturer’s specifications prior to starting the drilling. **In case of cracked material** such as brick ceilings or friable concrete, the Drilling Core Catcher BKF 350 **may not be used.**

- 4 The core stanchion has to be a right-hand threaded rod M10 with a minimum strength of 8.8.
- 5 **The drilling area beneath the drilling must absolutely remain inaccessible for persons, because errors in condition, application or material can never be excluded.**
- 6 Caution must be taken during the drilling through ceilings, because the user has to bear the entire additional weight of the drilling core at the rotary knob of the drill stand. Hence consider the following:
 - a) **Hold tight of the rotary knob.**
 - b) **Perhaps fix the drilling fence at the drill stand (if in doubt, please ask the drill stand manufacturer for further information).**
- 7 The permissible towing capacity of the drill stand and motor may not be exceeded.
- 8 The maximum for remaining drilling depth of the BKF 350 totals up to 4,5 cm. It is forbidden to drill deeper, because both locknuts could get in contact with the top connection part of the BKF 350 or could get jammed. As possible result, the threaded rod could be threaded off.
- 9 The included dowels can only be applied within the manufacturer's terms. It is indispensable, that a qualified expert has to examine the respective situation for each core drilling, and in that account recommends the respective mounting of the threaded rod. It is not possible to give a generally applicable recommendation for the mounting of the threaded rod and the included dowels are not to be understood as such.
- 10 Spare-/Wear-Parts
 - Threaded Rod M10 8.8
 - Allen Screw M10 x 35
 - Bolted Lever 6x55 M8/10**CAUTION: Use only once!**
 - Ball Bearing 6001 ZZ
 - Nut M10

Care & Maintenance

Please clean the Drilling Core Catcher BKF 350 after each use. Store at a dry location.

Lubrication enlarges the service life of the Drilling Core Catcher.

Operation

1

Mark the center of the borehole.

2

Place the dowel in the center of the borehole in accordance with specifics of the dowel manufacturer.



3

Place a mark at the drill bit; thickness of the ceiling less 10 per cent.



4

Mount core drill device and drill **without** Drilling Core Catcher to the marking.



5

Draw the drill bit out of the borehole and screw the threaded rod M10/8.8 into the dowel. Counter the dowel with nut (3).



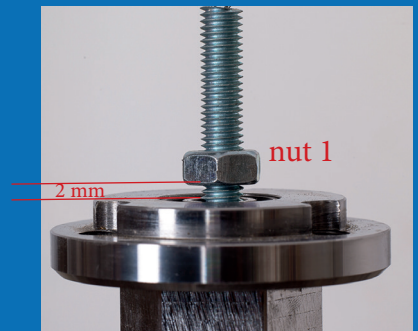
6

Reinsert the drill bit into the borehole and mount the bottom section of the Drilling Core Catcher on the drill bit.



7

Screw nut (1) on the threaded rod until there is an approx. gap of 2 mm between the nut and the bearing of the Drilling Core Catcher.



8

Screw nut (2) on and counter tightly with nut (1). See figure 2.

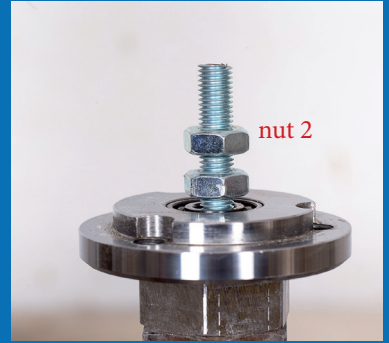


figure 2



9

Crosscut the threaded rod above nut (2).



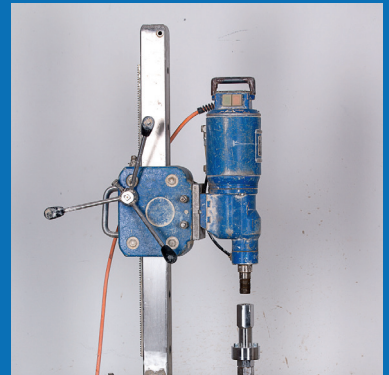
10

Place the top section of the Drilling Core Catcher onto the bottom section of the Drilling Core Catcher and screw both parts together with the screws included.



11

Screw the drill device onto the top of the Drilling Core Catcher.



12

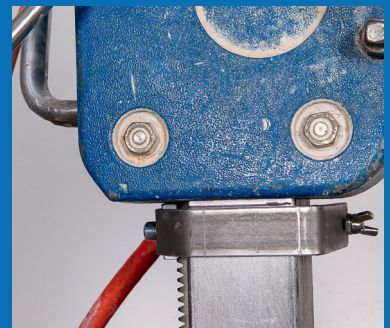
Mount the safety stop of your drill stand with additional 2 cm of the thickness of the ceiling (the safety stop is not included in the scope of delivery and should be obtained from the drill stand's manufacturer).

13

Continue with the drilling procedure and drill through the remaining ceiling.

14

The Drilling Core will be held in the drill bit. The carriage of the drill stand is now aligned with the safety stop.



15

Pull the drill bit out of the borehole as usual.



16

Secure the borehole with a wooden panel or the like.



17

Detach the top section of the Drilling Core Catcher from the bottom section of the Drilling Core Catcher.



18

Release nut (1) and nut (2) from the threaded rod and remove the drill bit from the drilling core.



BKF 350



**If you have any questions,
please consult:**

